

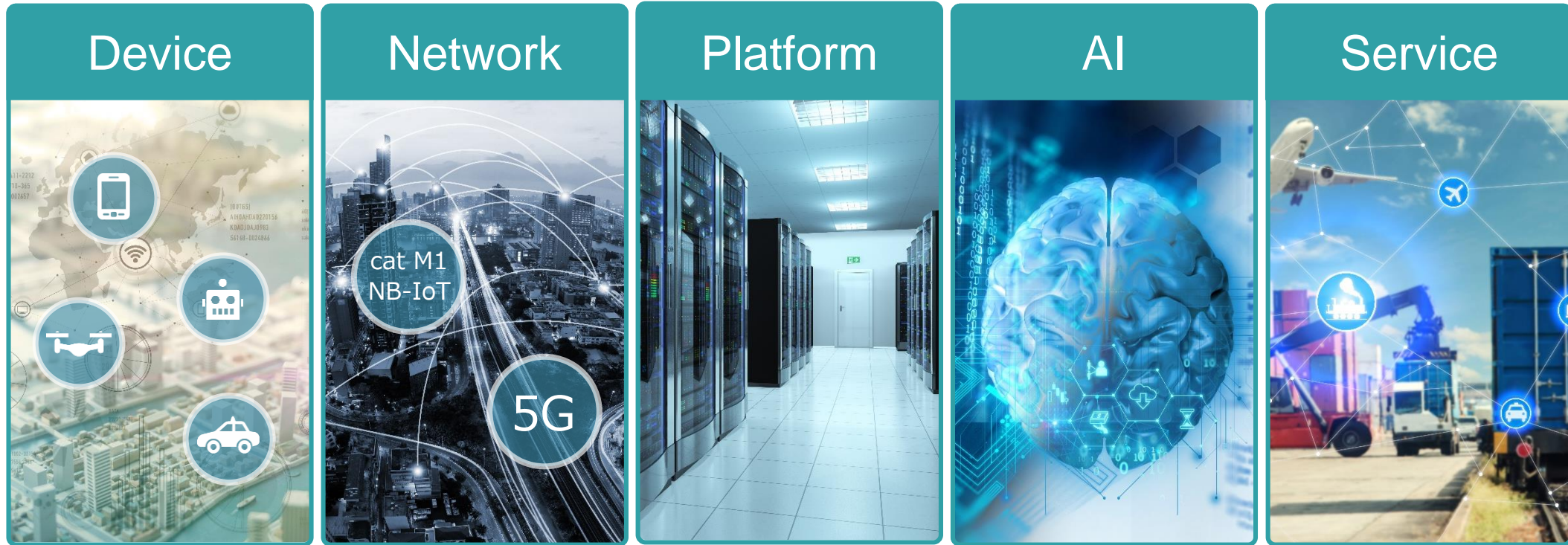
# Mobility Innovation

Representative Director & CTO  
SoftBank Corp.

Junichi Miyakawa



# Age of IoT/AI Begins



# IoT Connects Everything

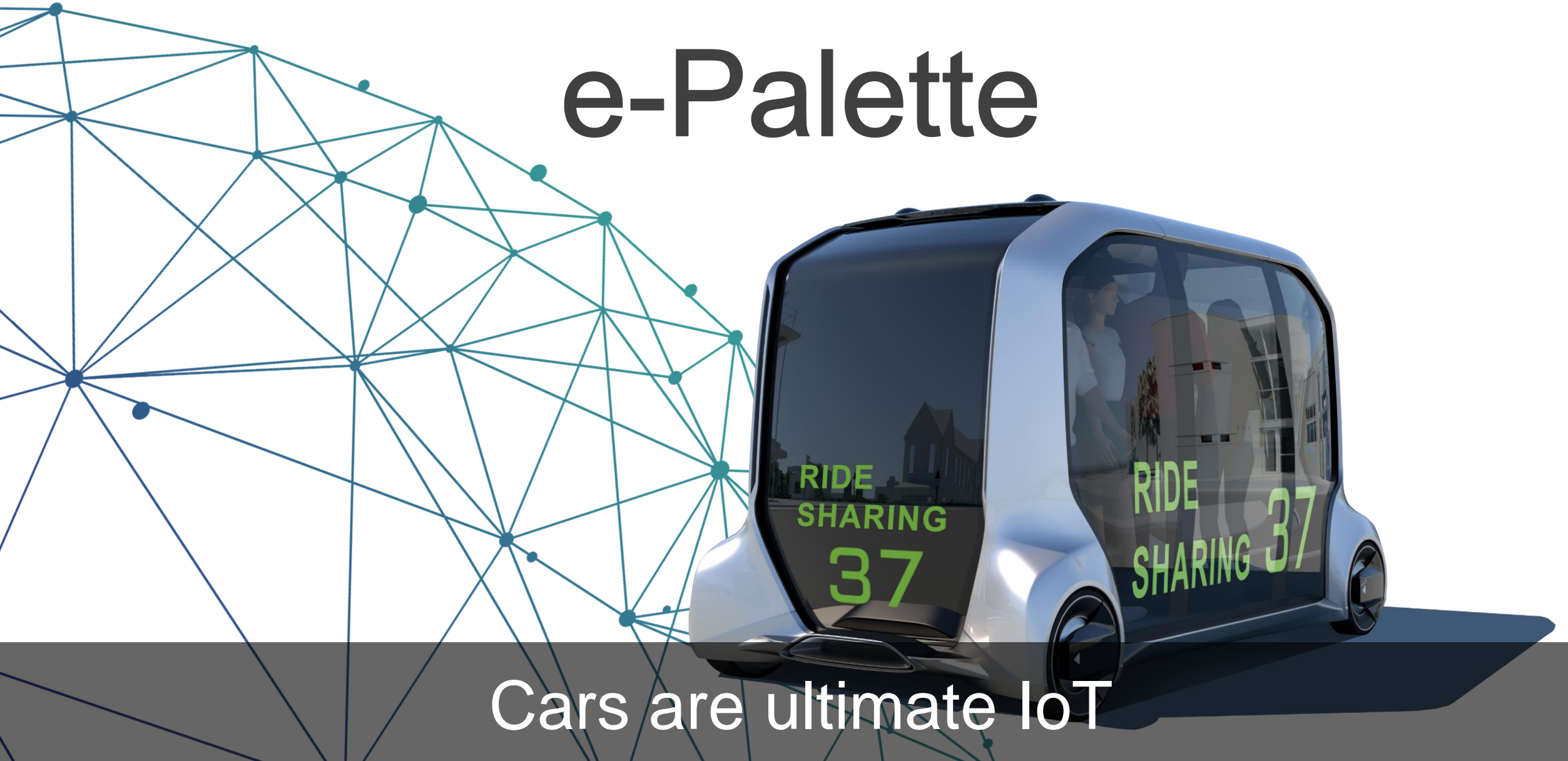


# IoT Connects Everything



# Mobility as a Service

## e-Palette



Cars are ultimate IoT

# e-Palette Concept

Services



Vehicles



Autonomous

# New Company Business

## Autono-MaaS

Services



Data · AI · Platform

Vehicles



Autonomous

\*1 "Autono-MaaS" is a new word created by combining "autonomous vehicle" and "mobility as a service (MaaS)." It describes mobility services that use autonomous vehicles provided by Toyota.

# New Company Overview

Company name	<b>MONET Technologies Inc.</b>
Share Structure	<ul style="list-style-type: none"><li>• SoftBank : 50.25%</li><li>• Toyota Motor Corporation : 49.75%</li></ul>
Capital <sup>※</sup>	JPY 2B (to be increased to JPY10B )
Head office	Minato-ku, Tokyo
Planned Date of Establishment	Before the end of FY2018
President & CEO	Junichi Miyakawa
Business	<ol style="list-style-type: none"><li>1. On-demand mobility service</li><li>2. Data analysis service</li><li>3. Autono-MaaS Business</li></ol>

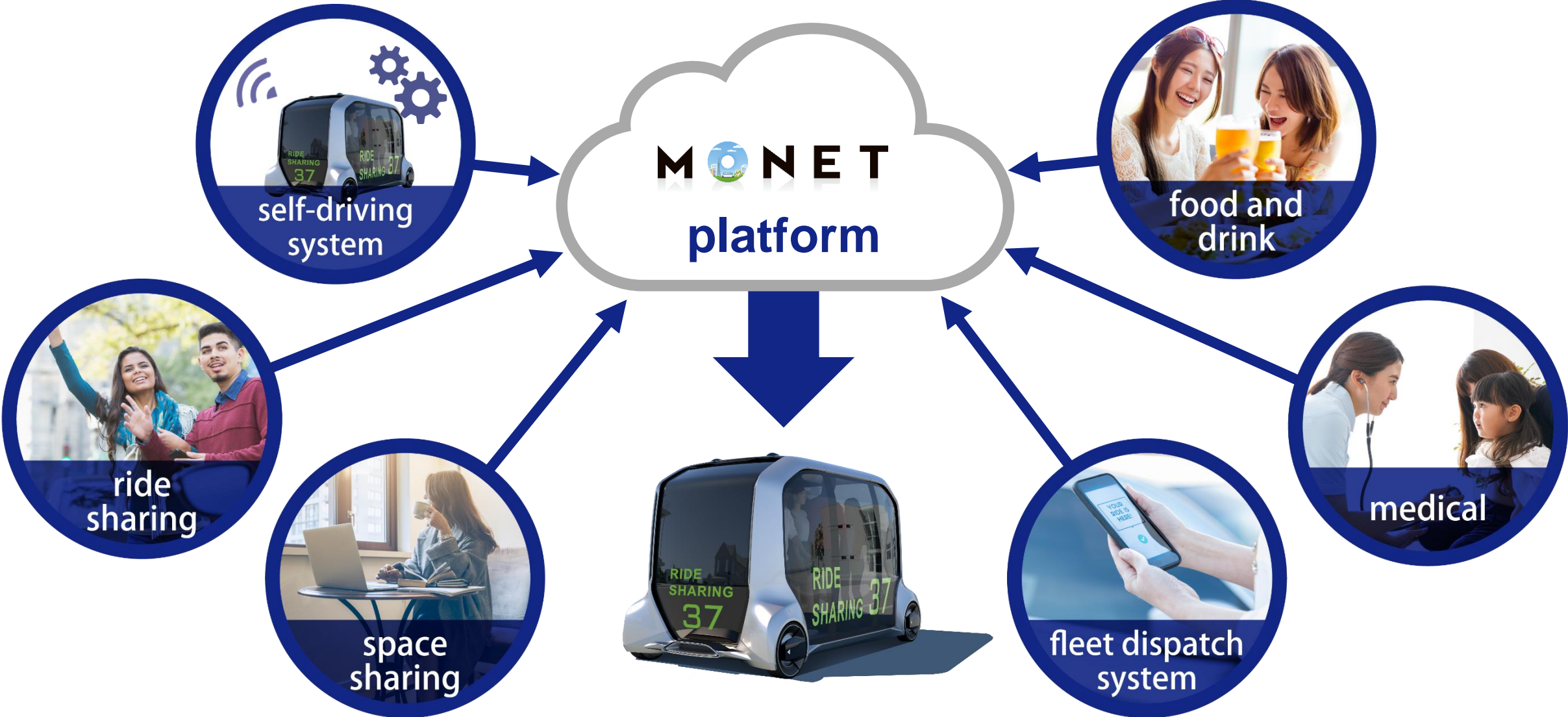


**M**  **NET**

MONET TECHNOLOGIES INC.

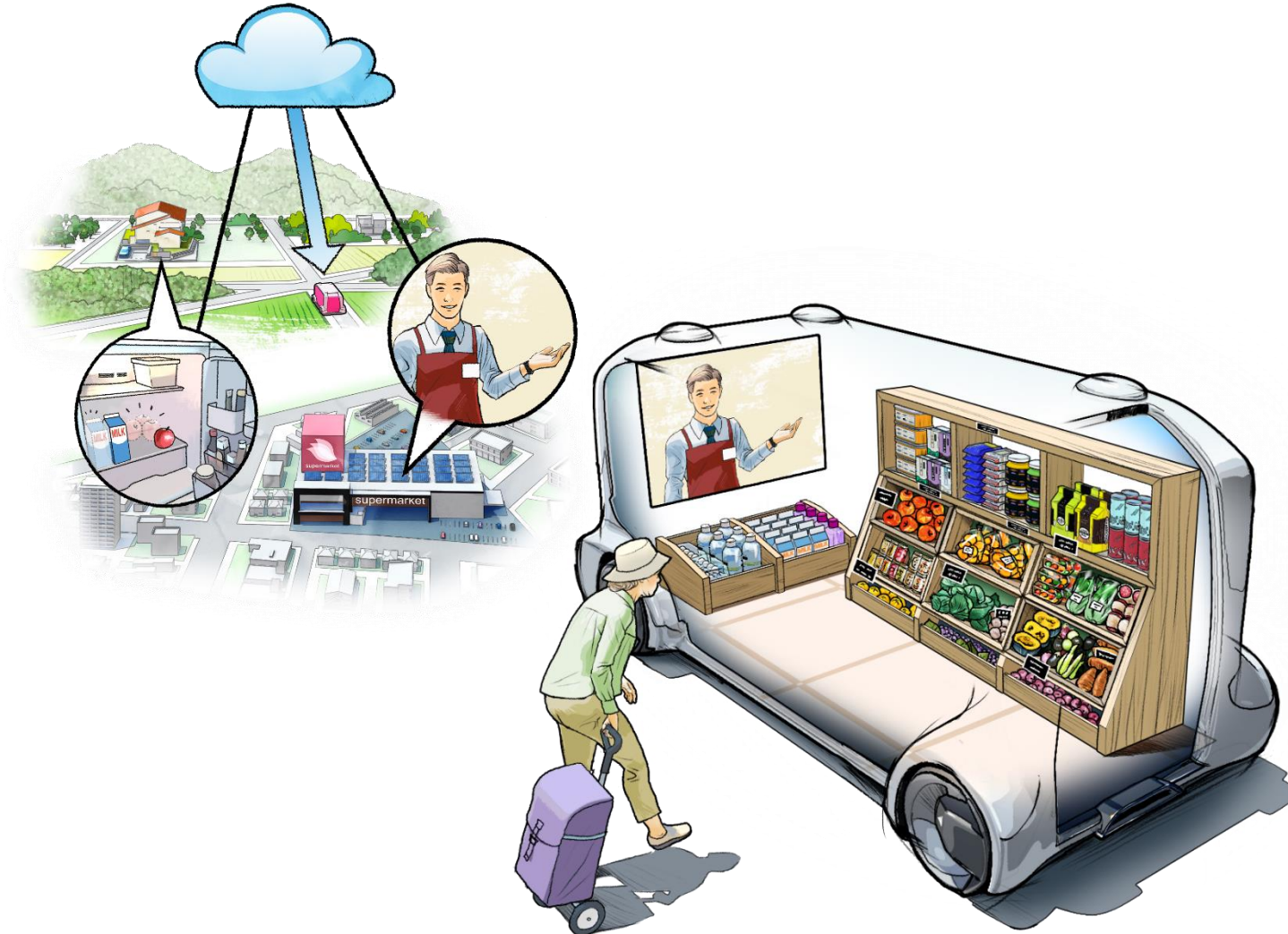


# Services Delivered by e-Palette

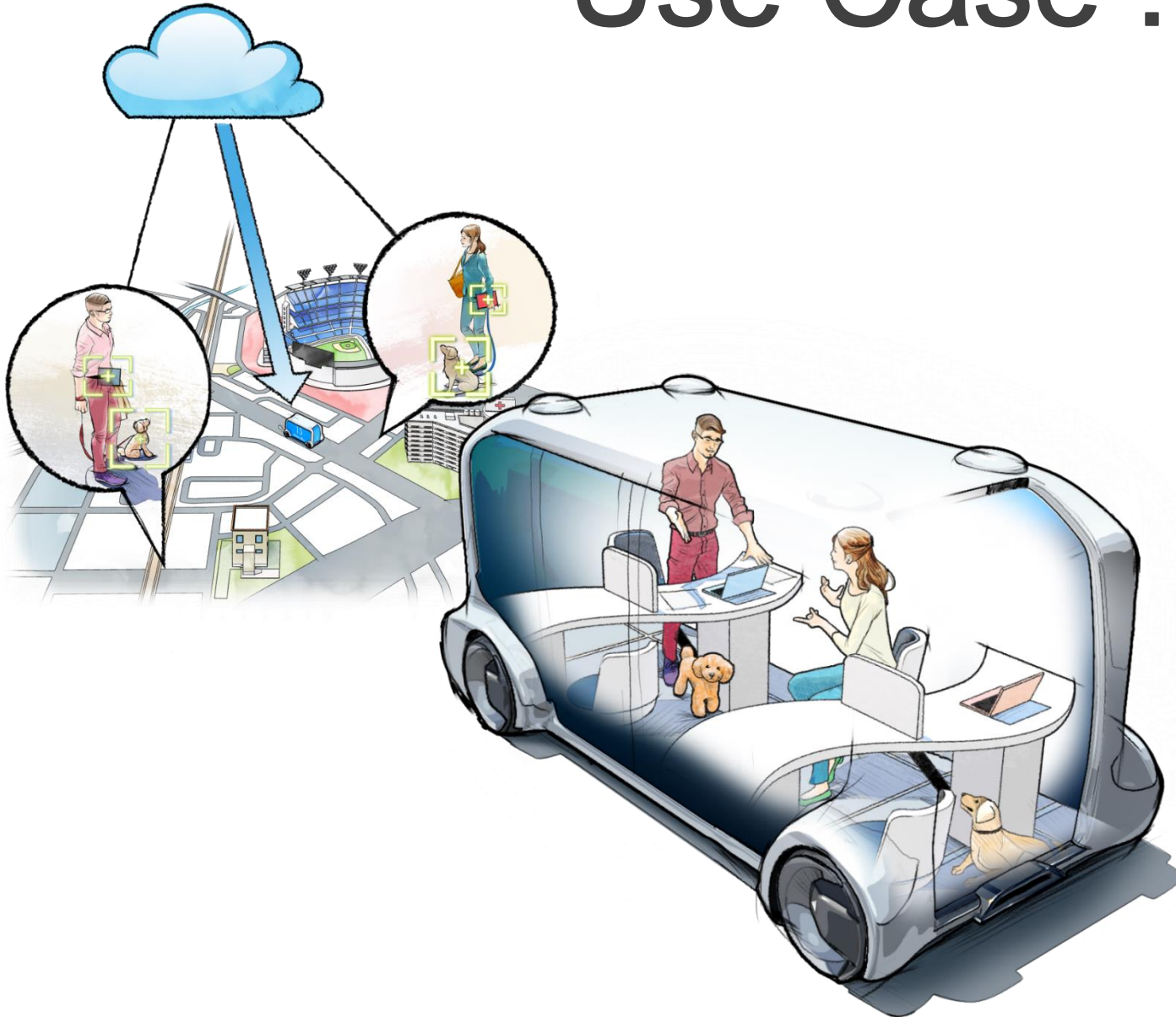


# Use Case : Mobile Convenience Store

Merchandise  
coming to your  
door

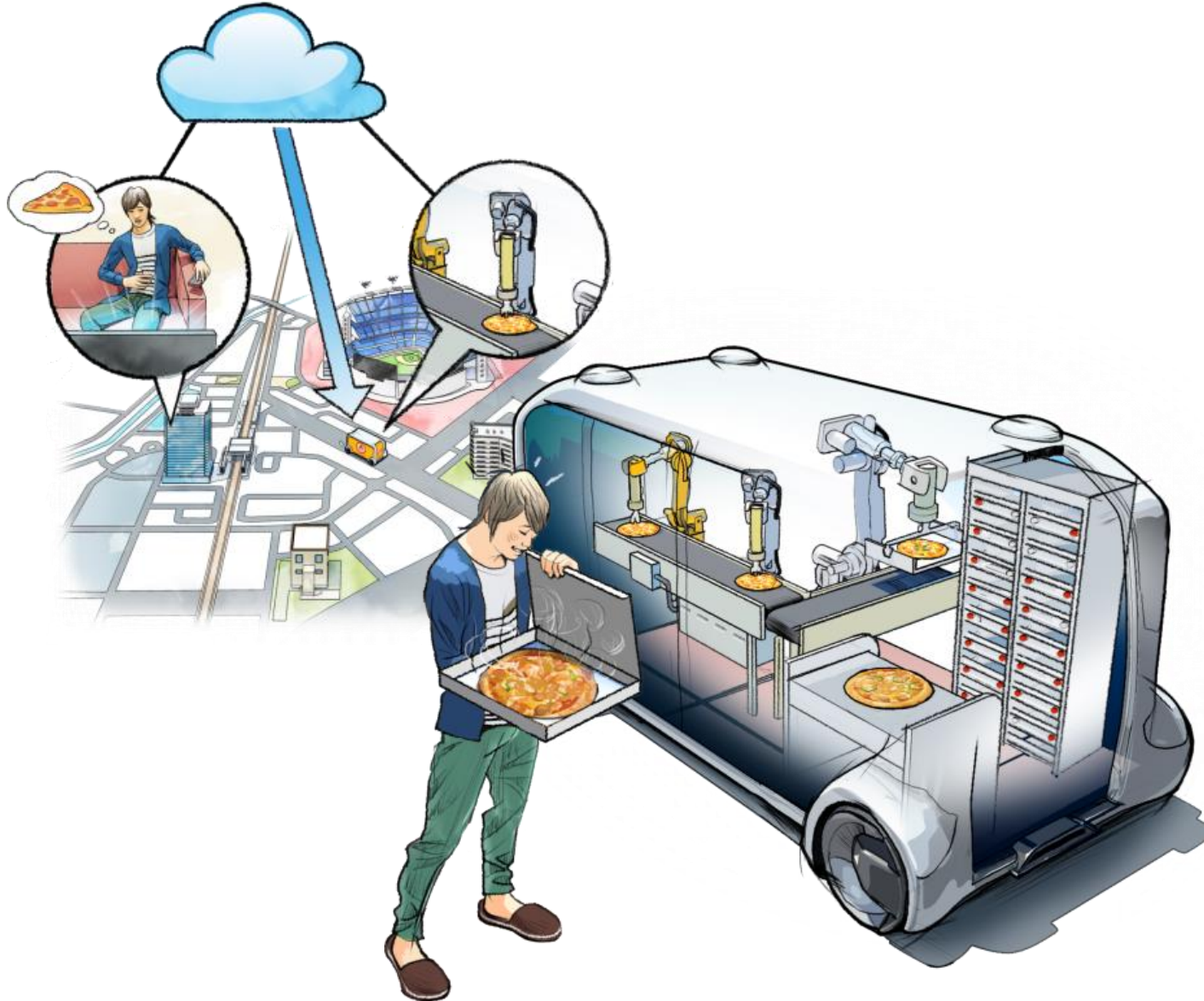


# Use Case : Office



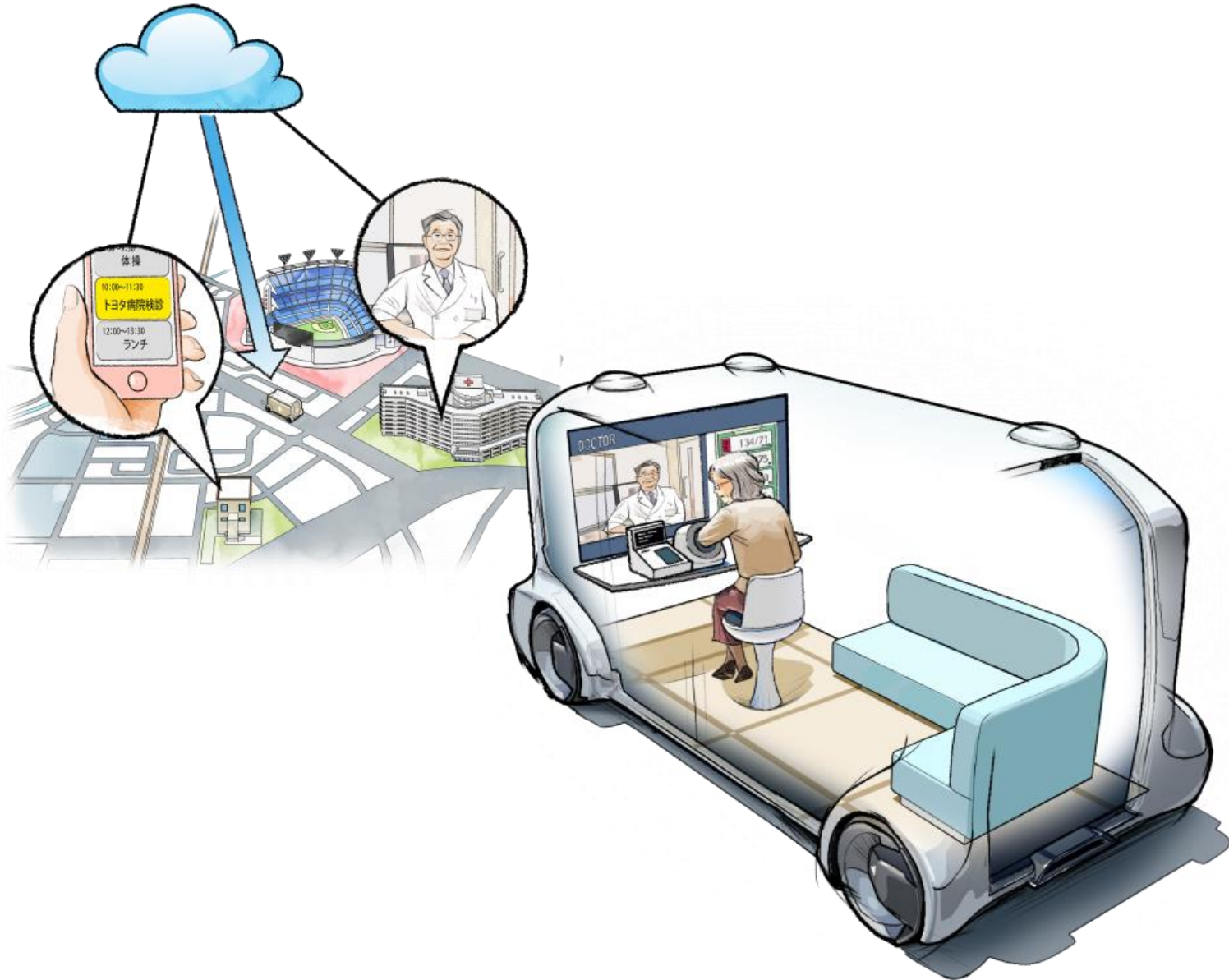
**Work space  
anywhere**

# Use Case : Food Delivery



**Cooked by  
robot chef, fresh  
from oven**

# Use Case : Shuttle to Hospital



**Pre-check on  
your way**

# Service Rollout Plan

2018

2019

2020

Middle of 2020

▲ Kickoff collaboration

On-demand mobility Service



▲ Launch Autonomous

e-Palette

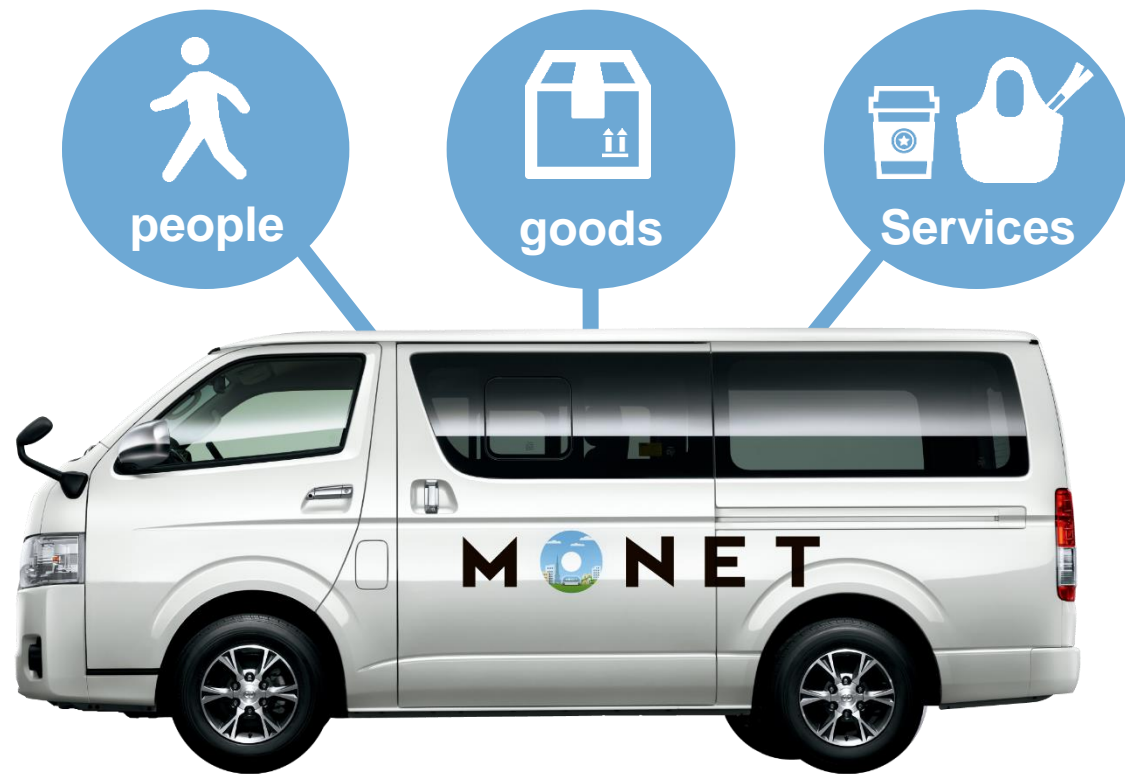


# On-Demand Mobility Service

Call anytime you want



Moving elements



Launch in municipalities designated as National Strategic Special Zone



# Current Challenges in Japan

Highly aging society

**1 in 4**  
aged 65 and older

Source : 「平成27年国税調査結果を基礎とした推計人口」  
(<http://www.stat.go.jp/data/nihon/02.html>) を加工して作成

Limited access to shopping facilities

**8.2M** people  
aged 65 and older

Source : 新たな食料品アクセスマップからみた食料品アクセス困難人口の動向 - 平成27年国勢調査に基づく推計結果 - 食料品アクセス困難人口の推計 (平成27年時点)

# of Drivers Who Returned License

**12x**  
in last 10 years

Source : 警察庁「運転免許統計」から国土交通省総合政策局 運転免許証返納件数の推移 (平成18年から平成27年)

Unprofitable bus operators

**83%**

Source : 日本バス協会「日本のバス事業と日本バス協会の概要」  
乗合バス収支状況 (平成27年度)

School closure

**5,000**  
in last 10 years

Source : 文部科学省廃校施設活用状況実態調査  
平成18年～平成27年の公立小中高등학교 廃校数累計

Districts with no hospital

**637**

Source : 厚生労働省 平成 26 年度無医地区等調査及び  
無歯科医地区等調査の結果 (平成26年推測値)

# Society MONET Strives for



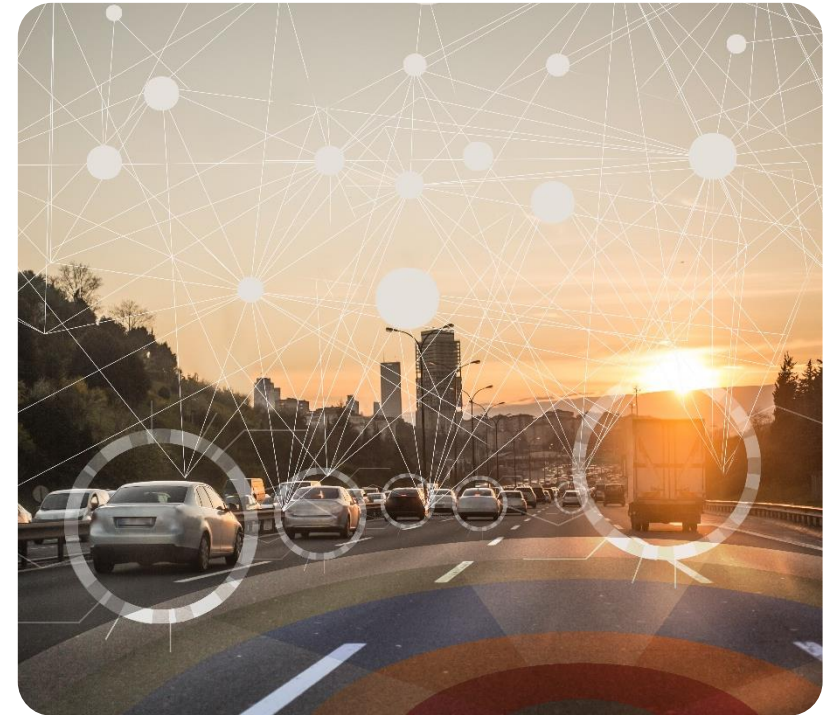
People with limited access  
to transportation/shops

**Saved**



Local transportation issues

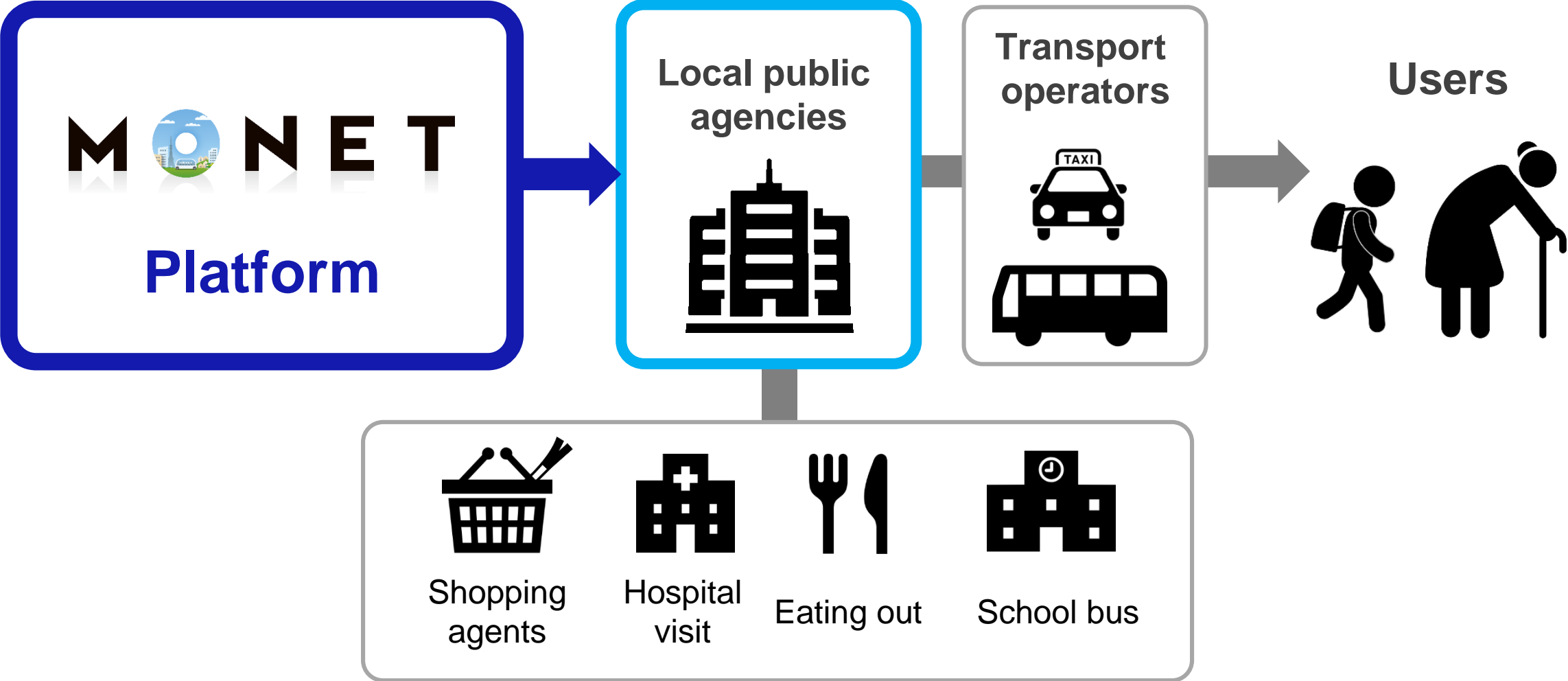
**Resolved**



With Next-Gen mobility,  
municipalities

**Revitalized**

# Deliver System to Local Public Agencies



# Develop Exemplary Cities

To be deployed in

**100**

municipalities

working on  
revitalization

- Launch in National Strategic Special Zones
- Prioritize in areas with serious transportation issues



# Promote Next-Gen Mobility

Local public agencies



Transport operators



Businesses



We promote next-generation mobility together with local governments, transport operators, and businesses

# M O N E T

MONET TECHNOLOGIES INC.

Mobility for all. Information Revolution - Happiness for everyone.

Life will get much better with mobility services.

 SoftBank

**TOYOTA**

