



東京大学  
THE UNIVERSITY OF TOKYO





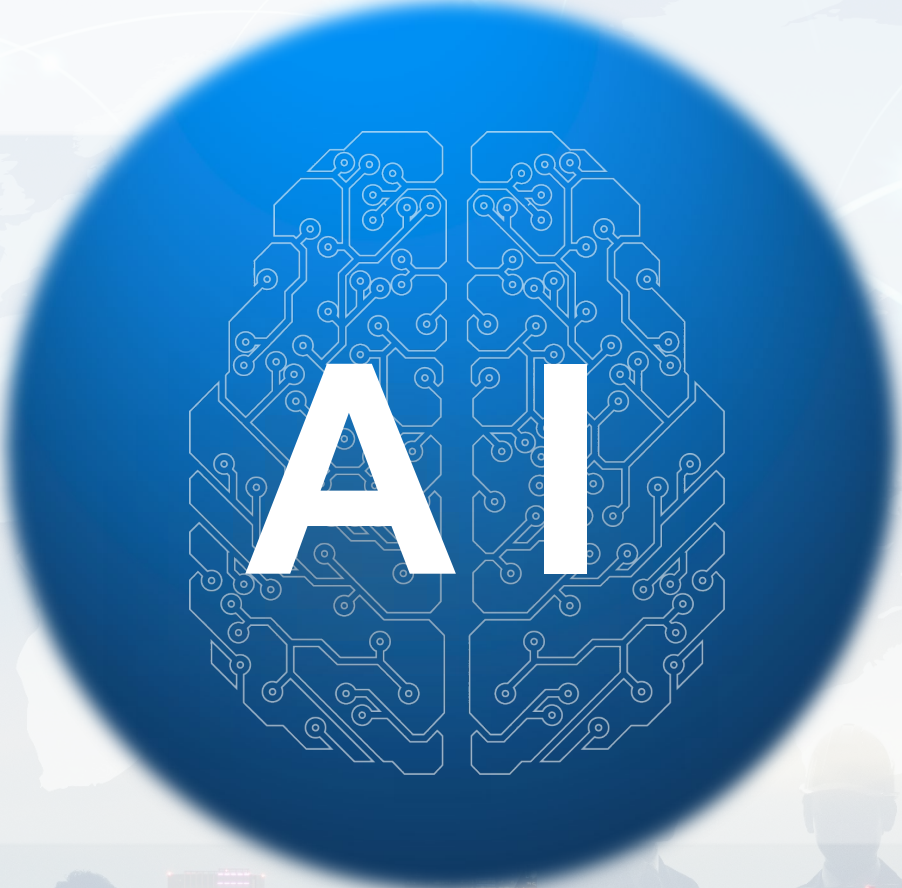
SoftBank

Junichi Miyakawa  
Representative Director & CTO  
SoftBank Corp.





# Redefining all industries



**AI**

**×**



**DATA**

**World is changing through use of AI**

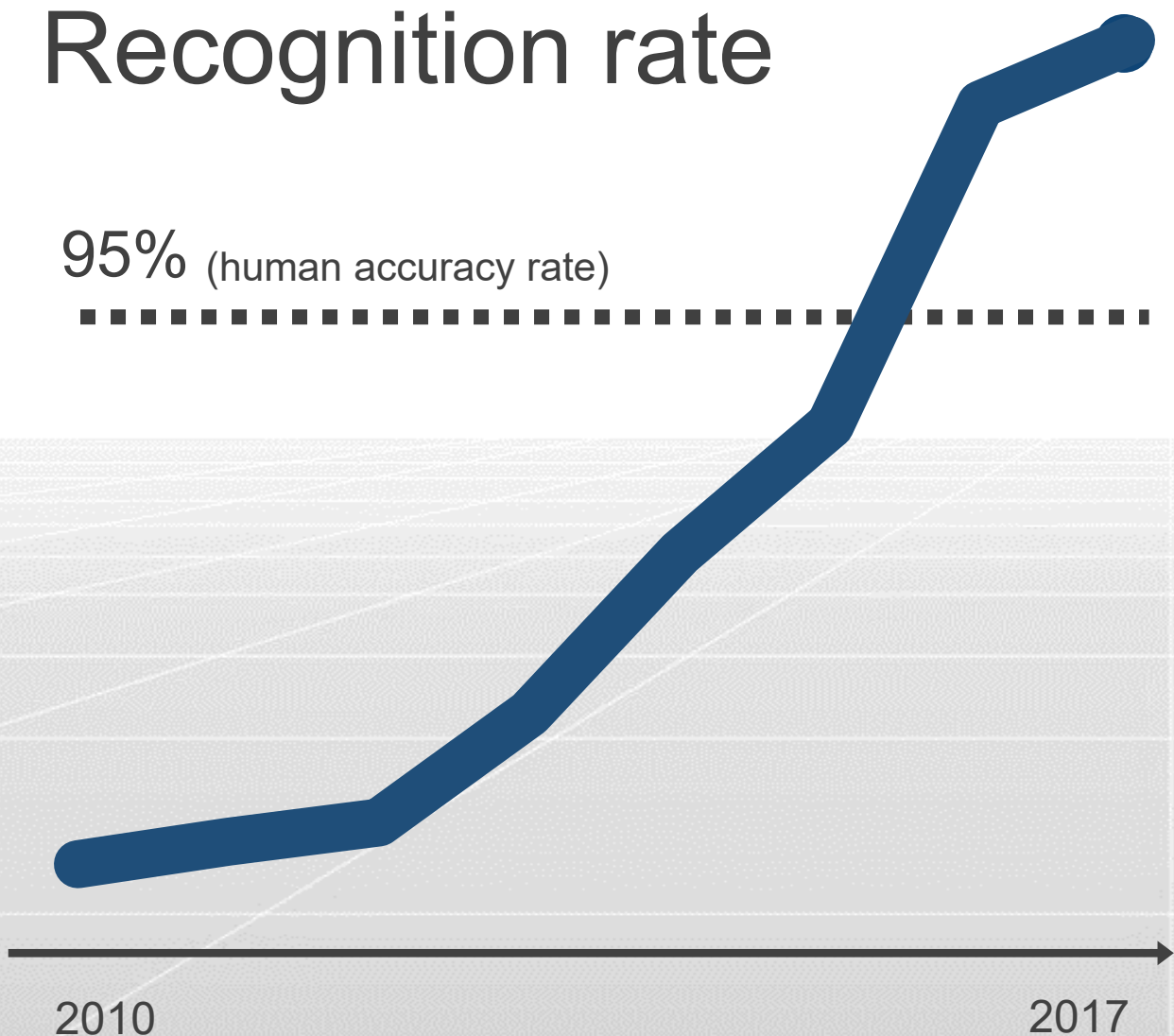
# Image Recognition

Recognition rate

95% (human accuracy rate)

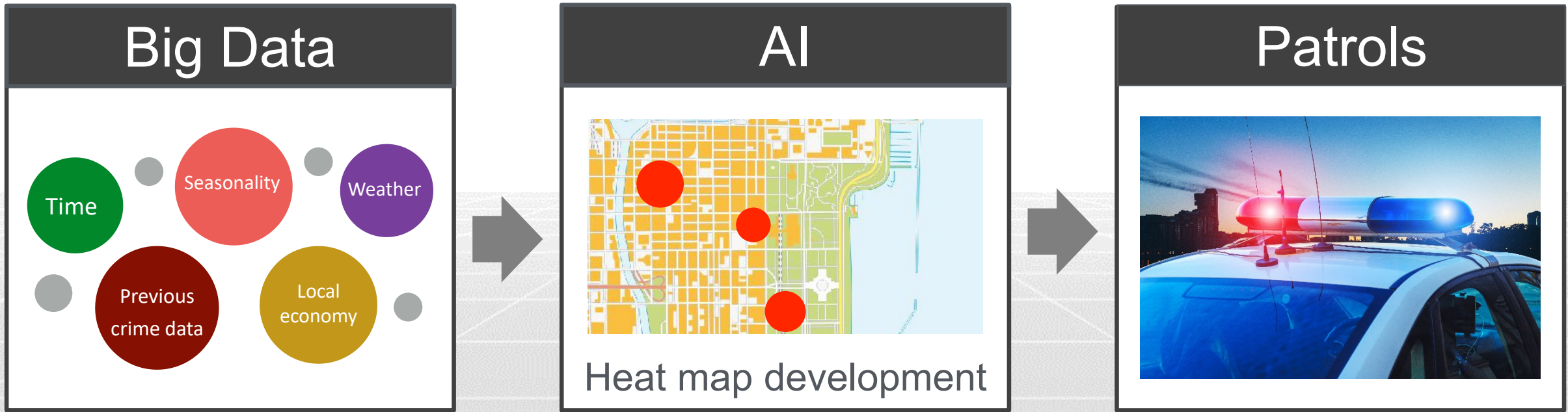
97.7%

More accurate than humans

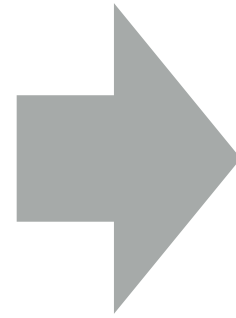
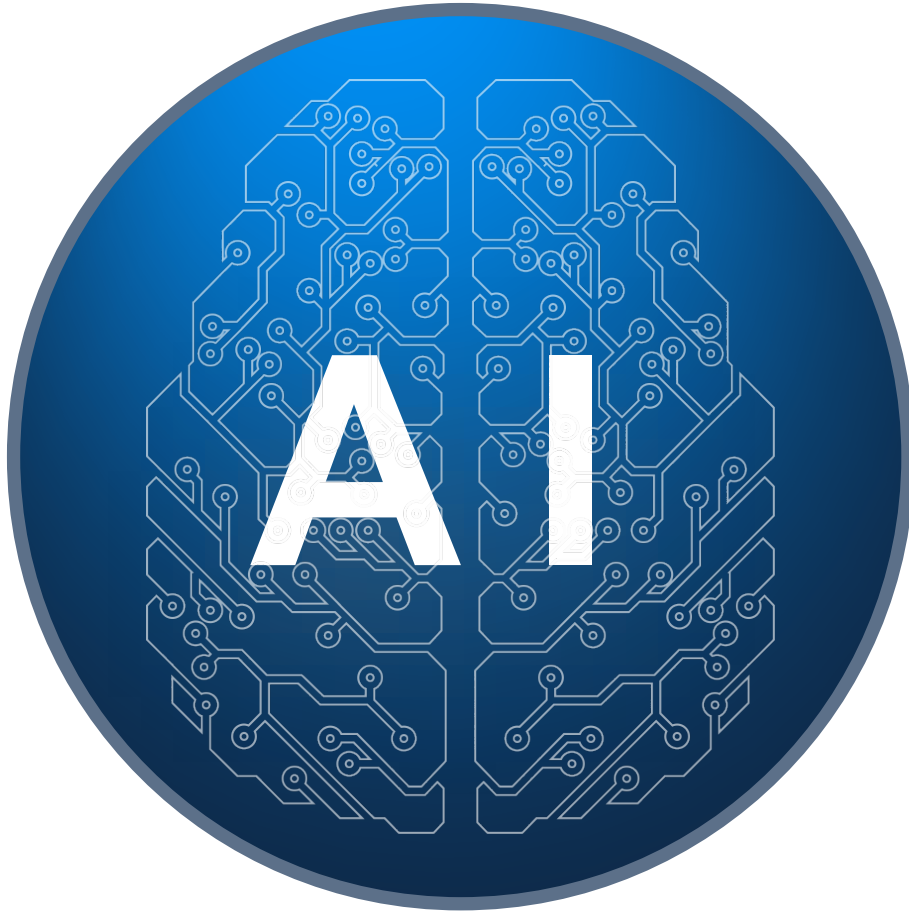


# Crime Prediction

 Chicago Police Department



# Shootings plummeted by up to 29%



Fundamental lifestyle change

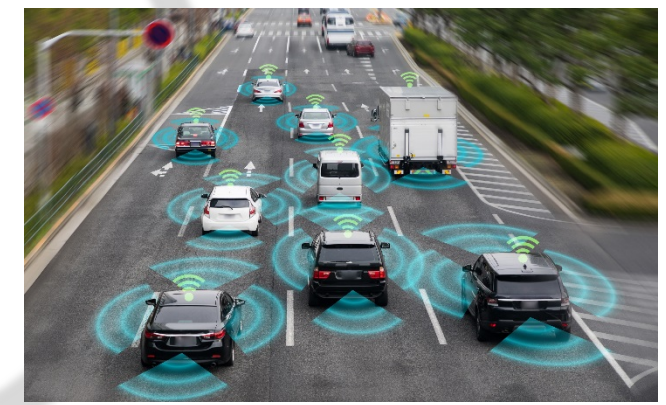
# Intense Competition in AI Industry



Fintech



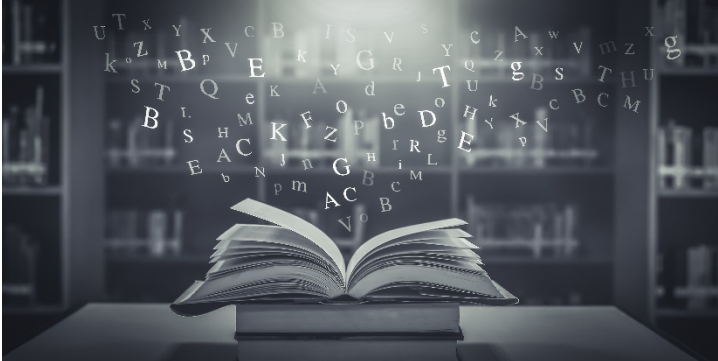
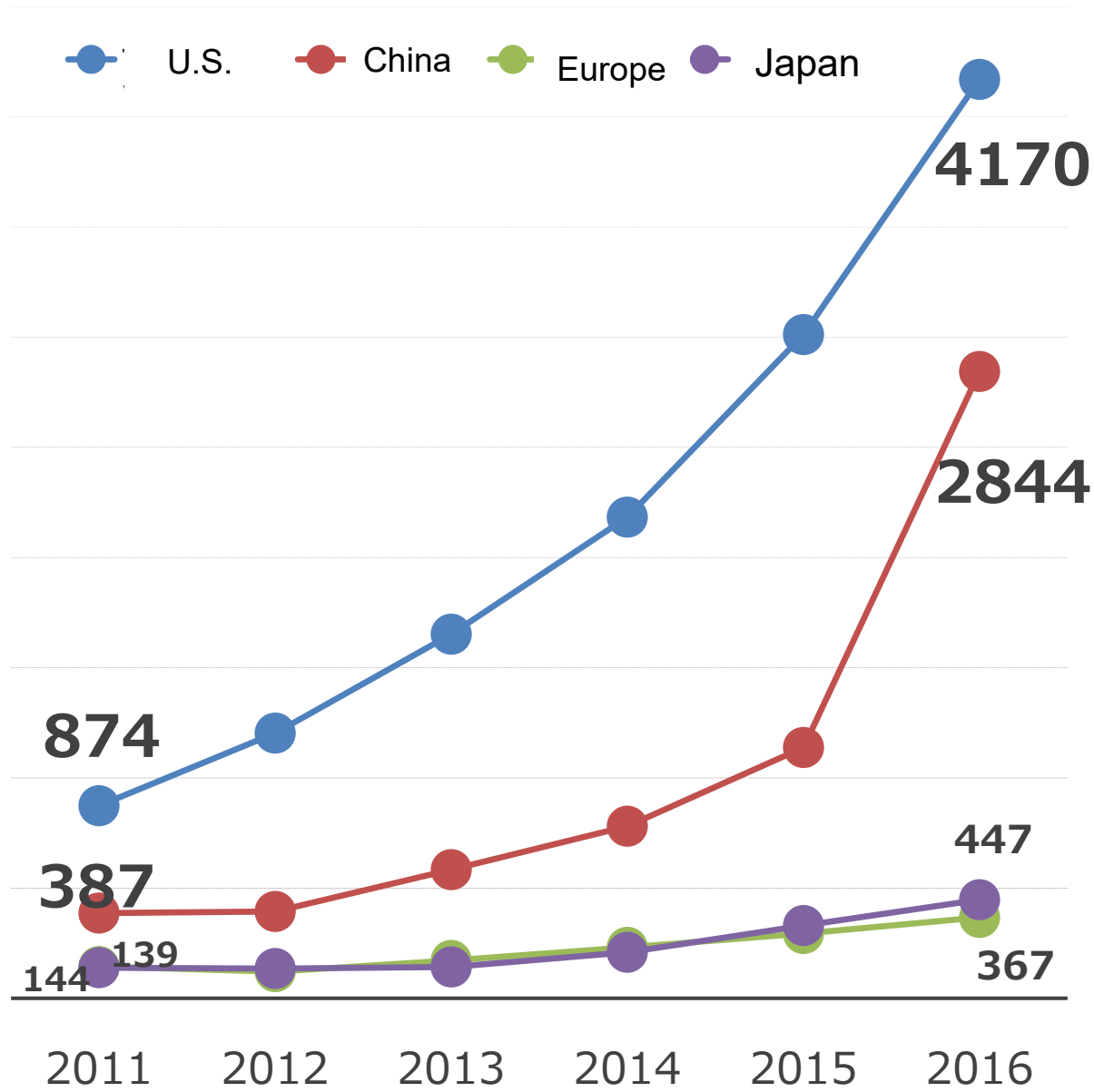
Advertising



Self-driving / MaaS



# Growth of AI-related Patents (2011~2016)



China clearly shows highest growth rate

Source: July 2019, Japan Patent Office Report on Survey of AI-related Invention Patent Applications

## Number of AI-related Patents (2006~2016)



Peking University 442

Nanjing University 385

Xidian University 284

(Reference)

China's leading telecom companies

approx.

**150~160**

# Universities contribute to rapid growth rate



Our mission going forward:

**Form strong bonds  
with academia,  
the cradle of AI**

# Beyond AI Institute



SoftBank



東京大学  
THE UNIVERSITY OF TOKYO

Forming a strong team  
to take on the world



# Beyond AI Institute



## Features

1.

Initiatives **focused on AI**

2.

Create structures with **a view to commercialization**

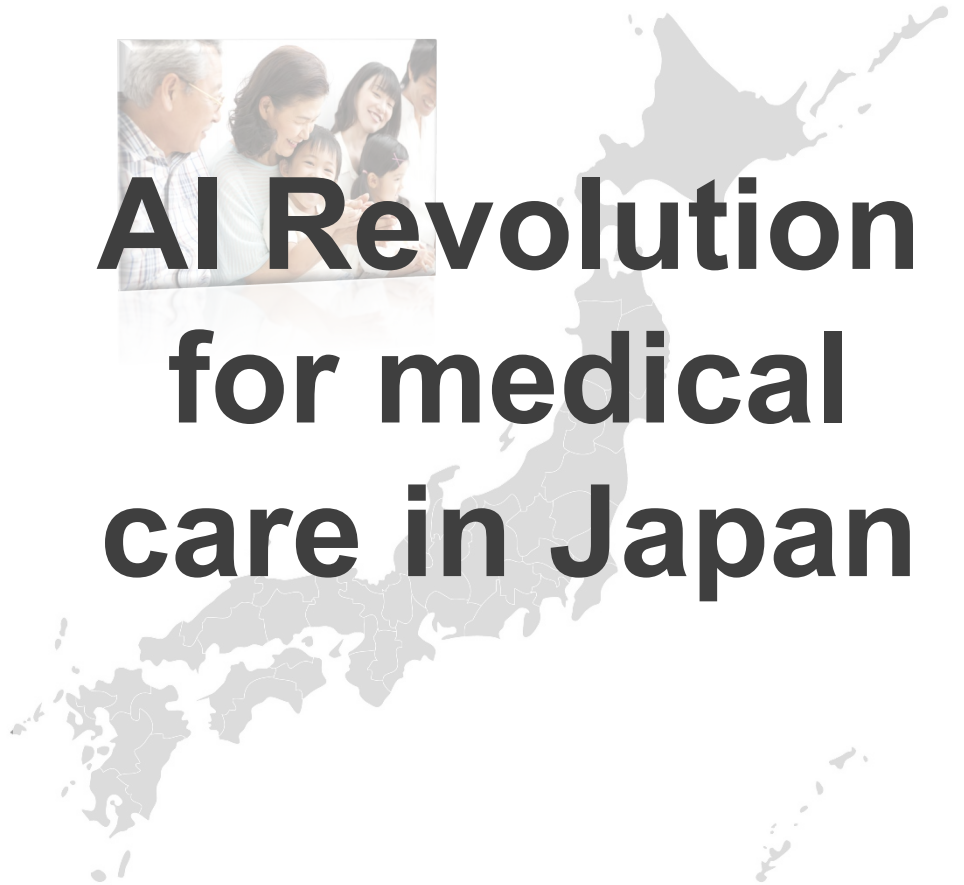
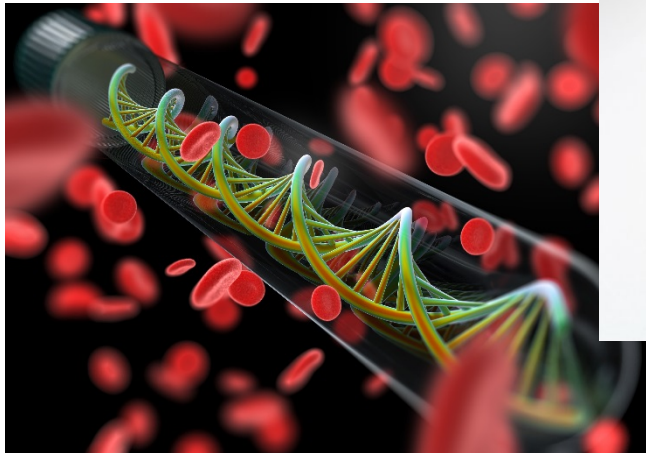
3.

Invite **highly respected international AI researchers**

## Advanced Medicine

<sup>\*1</sup>  
**KARIUS**

<sup>\*2</sup>  
 **GUARDANT™**



**AI Revolution  
for medical  
care in Japan**

\*1 Karius, Inc. is not an investee of SoftBank Group Corp., SoftBank Corp., or SoftBank Vision Fund

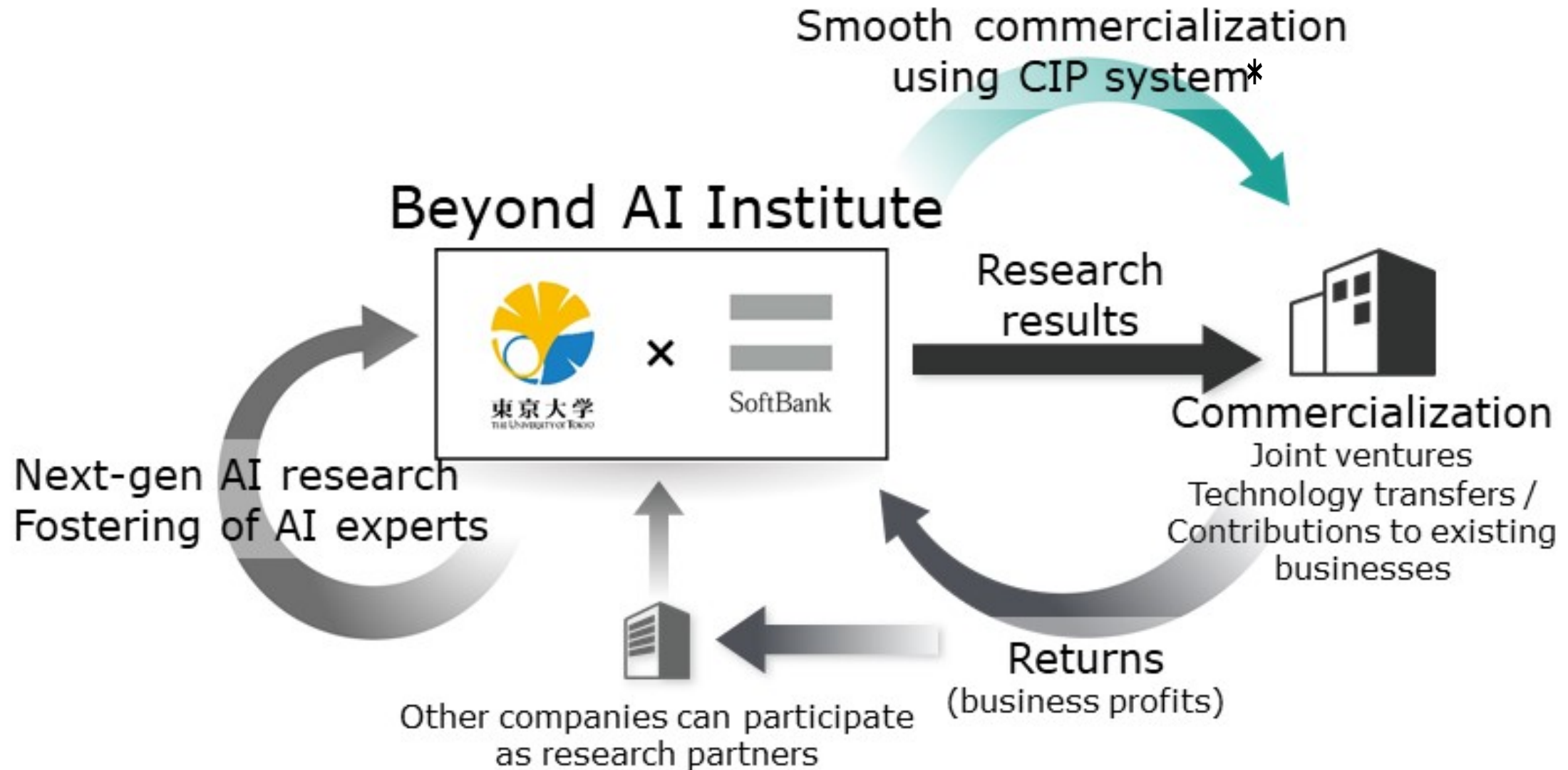
\*2 Guardant Health, Inc. is a SoftBank Vision Fund 1 investee

Note: Karius, Inc. and Guardant Health, Inc. are companies that utilize AI

SoftBank Corp. and other Group companies  
are aiming for  
scale of 20 billion JPY\*



\*including returns from business profits



\*CIP system: Collaboration Innovation Partnership System

A system designed for corporations and universities to collectively set up a preliminary organization (authorized corporation) to initiate research and development and then smoothly transition to a business by utilizing research results.

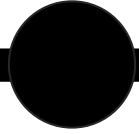




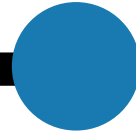
Research results  $\Rightarrow$  commercialization

An institute that continues to evolve

Today



Targeting  
Spring 2020



Targeting  
Winter 2020

Agreement

Open  
Hongo  
location

Open  
Takeshiba  
location

Research theme  
selection

