



About TV	8-2
TV Antenna.....	8-3
Initial Setup	8-3
TV Windows.....	8-4
Watching TV.....	8-6
Time Shift Playback While Watching	8-7
Data Broadcasts (Japanese)	8-8
Program Guide	8-9
Recording/Playing Programs	8-11
Recording Programs.....	8-11
Playing Recorded Programs.....	8-11
View/Record Timer	8-14
Setting View Timer.....	8-14
Setting Record Timer	8-14
Advanced Features	8-16
Channel Settings	8-16
Watching TV	8-16
Data Broadcasts.....	8-16
TV Link	8-17
Recording Programs.....	8-17
Playing Programs.....	8-18
View/Record Timer	8-18



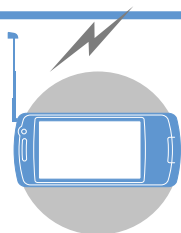
About TV

Handset supports One Seg Digital TV for cellular phones.

- One Seg is available only in Japan.

One Seg

One Seg is a digital TV broadcasting service for mobile devices. It uses one segment of the terrestrial digital band for TV and data broadcasts that you enjoy at home, on your handset.



Watch TV in
Widescreen

Data Broadcasts

Enjoy data broadcasts while watching TV. Access program-related information and even participate in the program (P. 8-8).

Record Programs

Record a program on memory card while viewing it and enjoy it again at a later time (P. 8-11).

View and Record Timer

Book programs you want to view/record. Program Guide can be used for booking programs (P. 8-14).

Quick Info

Sender and subject information appears for new message while TV is active (P. 14-5).

Precautions

- Never watch TV while riding a bicycle, motorcycle or driving a car. You may not hear the sounds around you clearly, or TV image/sound may distract you creating the risk of accident. Even while walking, pay attention to the traffic around you. Be especially careful at railway crossings and pedestrian crosswalks.
- TV image/sound may be affected if a call or message is received while watching TV.
- TV information (TV links or data you entered in Data Broadcast Mode) saved on handset cannot be transferred to another handset when you change your handset to another model or when it is repaired. Keep a memo of necessary information.
- TV is available when USIM Card is inserted and with a valid SoftBank contract.
- Extend TV Antenna completely to improve signal reception. If image quality does not improve, move handset away from body or change locations.



About TV

- TV image/sound may deteriorate or signal reception may become impossible in the following areas:
 - Areas far from signal towers
 - Mountain areas or places beside tall buildings
 - In tunnels, underground malls or buildings with a lot of signal obstructions
- For more information on One Seg services, visit the following website:
The Association for Promotion of Digital Broadcasting
From PC: <http://www.dpa.or.jp/>
From handset: <http://www.dpa.or.jp/1seg/k/> (Japanese)

When You First Activate TV

The first time you activate TV, the following information appears.

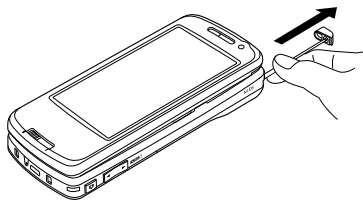
- How to change Styles
 - Functions unavailable in Landscape View
- Read information then press **YES**, and press **YES**. If **NO** is selected, information no longer appears when activating TV.

TV Antenna

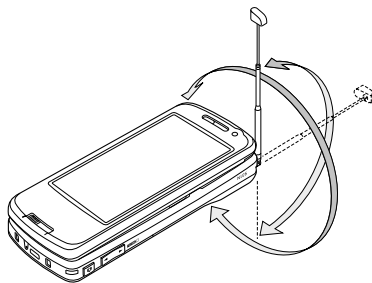
- Do not forcefully rotate Antenna.

Extend

1 Extend until Antenna stops

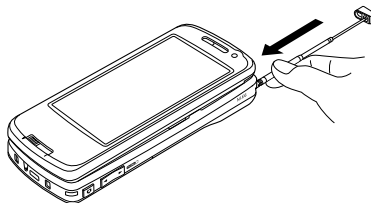


2 Adjust Antenna direction



Retract

1 Hold base of Antenna and push in



Initial Setup

Configure channel settings for your area and save stations to a channel list.

- 1** **MENU** → **TV** → **Channel Settings**
 - 2** **Select Area** → **Select area** → **Select prefecture/city** → **YES**
- Stations for the area are saved to a channel list.

Tip

- If signals from stations of the selected area are difficult to receive, search for stations using the **Automatic** option.



TV Windows



Landscape View



Portrait View

①	Quick Info Ticker scrolls across top of Display for new messages (P. 14-5).
②	Channel
③	Program Title
④	Subtitles
⑤	Sound Effect on (always on)
⑥	TV Effect OFF Sound Effects OFF CS5.1ch CS5.1ch Auto Auto Live Concert Drama Sports News Variety Movie Suitable for Each Genre Manner Manner Mode
⑦	Signal Strength Strong Moderate Weak Out of Broadcasting Area
⑧	Receiving Subtitle Information Subtitles Available
⑨	Volume
⑩	TV Power Saving TV Power Saving Active

⑪	Recording Status Recording Timer Recording Activated (Red) Recording Paused Time Shift Status (Green) Pause Normal Speed 1.3x Speed 2x Speed
⑫	EPG Program guide.
⑬	Data Broadcast
⑭	TV View Mode Image Mode Data Broadcast Mode



More Features

Advanced

Channel Settings

- Save Stations to a Channel List Automatically
- Save Stations of a Different Area to a Channel List
- Switch Channel Lists

(▶ P. 8-16)

Customize

Channel List

- Change Title of Channel List
- Delete a Channel List
- Assign Channels to Remote Control Numbers
- Delete a Channel

(▶ P. 14-20)

Other Settings

- Check TV Settings
- Reset Channel Settings
- Clear Data Broadcast Memory
- Reset TV Settings

(▶ P. 14-21)



Watching TV

- 1 → TV → → Watch TV →



TV Window

- 2 Use Keypad to select a channel
Press for channel 10, for channel 11, and for channel 12.
- 3 or press and hold to end TV → YES →

Tip

- TV volume is "0" when Manner Mode is active and no earphone is connected. Adjust with .
- Play TV audio from any Bluetooth® compatible audio device (P. 13-5).

TV Operations

Pause or Continue ¹	
Change Channel in Order	
Automatically Search for Receivable Channels	Press and hold • Press or to stop search
Adjust Volume	or press and hold or
Mute	
Show/Hide Subtitles ²	Press and hold
Toggle Windows ³	Press and hold Windows toggle as follows: Data Broadcast → Image & Data Broadcast → Image & Subtitles & Data Broadcast
Switch to Data Broadcast Mode ³	

- 1 TV viewing resumes in Time Shift playback.
2 Available in Landscape View.
3 Available in Portrait View.

In Touch Style

- 1 → TV → Watch TV
- 2 Tap Display to open Pallet
- 3 Use Pallet to select channel
- 4 Tap Display to close Pallet
Tap area outside Pallet.
- 5 Open Pallet to end TV → → YES

TV Operations

Tap Display to open Pallet.



TV Window (Touch Style)



Watching TV

①	QUIT
②	FUNC The following functions are available. <i>Sound Effect, V.Img Effect</i> : Set sound and visual effects to suit program. <i>Screen OFF</i> : Display view turns off, audio remains. Press any button or change Style to activate view. <i>Subtitles OFF</i> or <i>Subtitles ON</i> : Toggle on/off.
③	Pause or Resume Pallet for Time Shift playback opens (P. 8-7).
④	Channel Tap channel icon to open channel selection Pallet. Alternatively, tap or to cycle through channels.
⑤	Adjust Volume* Drag or tap at target volume level to adjust.

* Alternatively, use or .

Tip

- Subtitles are off while Pallet is open.

In Share Style

- **TV** → → **Watch TV** →
- Use Keypad to select a channel**
- or press and hold to end **TV** → **YES** →

Taking Calls While Watching TV

When a call arrives or when Alarm or Schedule Alarm is activated while watching TV, TV is interrupted to receive the call, etc. TV resumes after call or function ends.

Time Shift Playback While Watching

Resume watching TV even after pausing with playback.

- Time Shift playback is available when TV is paused or you receive a call.
- Time Shift playback is unavailable when *Time Shift Setup* is set to *Auto OFF*.

- [TV] window** → TV is paused.
- Time Shift playback starts.

Note

- Handset stores up to two minutes of recording. Data is overwritten starting from the oldest data. If you resume viewing after pausing for more than two minutes, viewing starts from the beginning of stored data (not from where you paused).

Tip

- Other channels are unavailable while TV is paused or during Time Shift playback.

Playback Operations

Start from Beginning of Stored Playback Data	
Change Playback Speed	
End Playback	

In Touch Style

- [TV] window (Touch Style)** → TV is paused.
- Time Shift playback starts.



Playback Operations

Tap Display to open Pallet.



Time Shift Playback Window (Touch Style)

①	QUIT End TV.
②	FUNC The following functions are available. Sound Effect, V.Img Effect: Set sound and visual image effects to suit program. Screen OFF: Display view turns off, audio remains. Press any button or change Style to activate view. Subtitles OFF or Subtitles ON: Toggle show/hide.
③	View Resume TV.

④	Start Time Shift playback from beginning of stored One Seg data. or Pause or resume Time Shift playback. , or Select playback speed (1.3 times, 2 times or Normal).
⑤	Adjust Volume* Drag or tap at target volume level to adjust.

* Alternatively, use or .

Data Broadcasts (Japanese)

Data broadcasts are available while watching TV in Portrait view. Access various kinds of program-related and other information in Data Broadcast Mode.

1 [TV] window →



Data Broadcast Mode Window

Data Broadcast Mode is activated.

2 Select a link →

If a confirmation for Internet access appears, select **YES** and press to access the Internet. Select **YES (By default)** and confirmation no longer appears.



TV Link Operations

Select a Link	
Confirm Selection of a Link	
Switch Pages	
Previous Page*	
Toggle Windows	Press and hold Windows toggle as follows: Data Broadcast → Image & Data Broadcast → Image & Subtitles & Data Broadcast
Switch to TV Mode	

* Available when connected to a data broadcast website.

Note

- Viewing data broadcast information requires no fees. However, accessing Internet links will incur transmission fees.
- Data broadcasts are unavailable in Landscape view.

Program Guide

- Use Program Guide to set timer to record/activate programs.

1 → TV → → **Program Guide**

See Program Guide help for further operations.

Before first using Program Guide, configure initial settings and agree to the terms of use. Follow the onscreen instructions.

More Features

Advanced

Watching TV

- Show Program Information
- Adjust Brightness
- Switch Main & Sub Audio
- Switch Audio Channels
- Show Current Channel List Information
- Add Current Station to Channel List
- Select a Program

▶ P. 8-16

Data Broadcasts

- Reload Page Accessed from Data Broadcast
- Check Certificate for SSL Page
- Exit Page and Return to Data Broadcast

▶ P. 8-16

TV Link

- Save TV Links
- Access Pages/Information from TV Links
- Show Details of a TV Link
- Show Number of Saved TV Links
- Delete TV Links

▶ P. 8-17



Customize

Image & Sound

- Set Subtitle Display
- Show/Hide Icons in Landscape View
- Save Battery by Dimming Backlight
- Keep Backlight On When Viewing TV
- Set Backlight Duration for Viewing TV
- Set Sound Effects
- Set Visual Image Effects
- Set TV to Pause or Continue for Incoming Calls (Time Shift Playback)

[▶ P. 14-20](#)

Data Broadcasts

- Set Whether to Show Images in Pages Accessed from Data Broadcasts
- Enable/Disable Sound Effects of Data Broadcasts
- Show Confirmation Window Again

[▶ P. 14-21](#)



Recording Programs

TV programs can be recorded on memory card while you are watching them.

- Data broadcasts are not saved with recording.

1 [TV] window ⇨ Press and hold

Recording starts.

■ To Capture a Screenshot

⇨

Captured screenshots are saved to TV folder in Data Folder.

2

Recording ends.

■ When Memory Becomes Full

Recording ends and the recorded portion is saved.

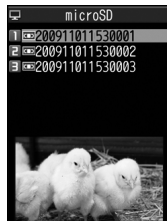
Note

- The channel remains fixed during recording.
- Recording certain programs is restricted. If a restriction is activated while recording a program, recording automatically ends, and the part that has been recorded so far is saved.
- When appears to indicate handset is out of the broadcasting area, recording is paused. When the signal strength recovers to weak or better, recording automatically resumes.
- Recordings that you make are for personal use only. Other uses require the permission of the copyright holder.

Playing Recorded Programs

1 ⇨ Data Folder ⇨ ● ⇨ TV ⇨ ●

2 Video ⇨ ● ⇨ microSD ⇨ ●



Recorded Program List

■ To View Captured Screenshots

⇨ Image ⇨ ● ⇨ Select a folder ⇨ ●

3 Select a file ⇨ ●



Recorded Program Playback Window

■ To Stop Playback

⇨ CLEAR

Tip

- If a program was stopped partway through, resume playback from that point. Select YES and press ●.



Recording/Playing Programs

Playback Operations

Pause/Play	⏸ or ⏪/LOCK
Adjust Volume	🔊 or press and hold 🔊 ⏮77- or ⏭/L/R
Mute	🔇
Fast Play ¹	⏮
Frame Forward	⏭ during pause
Skip Ahead 30 Seconds ²	Press and hold ⏮ or press and hold ⏭/L/R
Skip Back 30 Seconds ²	Press and hold ⏮ or press and hold ⏭/L/R
Toggle Sound Effects	🔊
Show/Hide Subtitles	Press and hold 📄

- 1 Toggle normal and fast play.
- 2 Available when recorded program is 30 seconds or more.

In Touch Style

1 📺 → TV → Video

2 Video → microSD

■ To View Captured Screenshots
→ Image → Tap a folder

3 Tap a file

■ To Stop Playback
Tap Display to open Pallet → QUIT

Operation During Program Playback

Tap Display to open Pallet.



Recorded Program Playback Window (Touch Style)

① Playback Position

Drag left or right, or tap playback bar at target position to start playback at that position.

② Skip Back 30 Seconds¹

③ QUIT

④ FUNC

The following functions are available.
Sound Effect, V.Img Effect: Set sound and visual image effects to suit program.

Screen OFF: Display view turns off, audio remains. Press any button or change Style to activate view.

Subtitles OFF or Subtitles ON: Toggle show/hide.

⑤ Select 1.3, Normal or Frame Forward (1.3 times, Normal or Frame Forward). Frame Forward available while playback paused.

⑥ Pause/Play

⑦ Skip Ahead 30 Seconds¹

⑧ Adjust Volume²

Drag or tap at target volume level to adjust.

- 1 Alternatively, press and hold ⏮77- or press and hold ⏭/L/R for Skip Ahead 30 Seconds or Skip Back 30 Seconds. Available when recorded program is 30 seconds or more.
- 2 Alternatively, use 🔊77- or 🔊/L/R to adjust.



Recording/Playing Programs

In Share Style

- 1 ⇒ **TV** ⇒ ⇒ **Video** ⇒
- 2 **Video** ⇒ ⇒ **microSD** ⇒
 - To View Captured Screenshots
 - ⇒ **Image** ⇒ ⇒ Select a folder ⇒
- 3 Select a file ⇒
 - To Stop Playback
 - ⇒



Recorded Program Playback Window (Share Style)

Playback Operations

Pause/Play	OR
Adjust Volume	or press and hold OR
Mute	
Fast Play ¹	
Frame Forward	during pause
Skip Ahead 30 Seconds ²	Press and hold or press and hold
Skip Back 30 Seconds ²	Press and hold or press and hold
Toggle Sound Effects	
Show/Hide Subtitles	Press and hold

- 1 Toggle normal and fast play.
- 2 Available when recorded program is 30 seconds or more.

More Features

Advanced

Recording Programs

- Edit Title of a Recorded Program
- Reset Title of a Recorded Program
- Switch Views of Recorded Program List
- Check Information on a Recorded Program
- Check Volume of Recorded Programs
- Delete Recorded Programs

(▶ P. 8-17)

Playing Programs

- Specify Point to Start Playback

(▶ P. 8-18)

Customize

Recording Programs

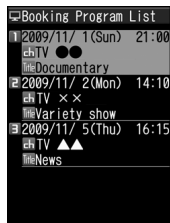
- Continue/End Recording at Low Battery

(▶ P. 14-21)



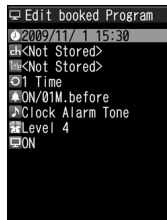
Setting View Timer

- 1 ⇒ TV ⇒ ⇒ **Booking**
Program List ⇒



Booking Program List

- 2 ⇒ **New** ⇒



View Timer Setting Window

- 3 ⇒

▶ To Enter Date Manually
Enter Date ⇒ ⇒ Enter date and time ⇒

▶ To Select a Date from Calendar
Choose Date ⇒ ⇒ Select a date
⇒ ⇒ Enter time ⇒

- 4 ⇒ ⇒ **Select a channel** ⇒

- 5 ⇒ ⇒ **ON, ON/Set Time or OFF** ⇒ (⇒ **Select a time** ⇒

- 6

Note

- Set a timer start date and time that is more than one minute from the present time.

Tip

- When the set time arrives, alarm sounds for about five minutes and information (start date/time, channel, program title and animation) appears. Press any key to stop alarm tone.

Setting Record Timer

- 1 ⇒ TV ⇒ ⇒ **Timer**
Recording List ⇒



Timer Recording List

- 2 ⇒ **New** ⇒



Record Timer Setting Window



View/Record Timer

3

Enter date and time to start/end recording.

▶ To Enter Date Manually

Enter Date Enter date and time to start and end recording

▶ To Select a Date from Calendar

Choose Date Select a date Enter time

4 Select a channel

5 ON or OFF

6 (YES or YES (Confirm Once)

Note

- Set a timer start date and time that is more than one minute from the present time.

Tip

- One minute before recording starts, alarm sounds for about two seconds. Information appears on Display (start and end dates and times, channel, program title and animation) and TV activates. Recording starts at the set start time.

More Features

Advanced

View/Record Timer

- Select a Timer Alarm Tone
- Enter Title of Booked Program
- Set Regular Activation of View or Record Timer
- Set Timer Alarm Volume
- Activate TV Directly from Timer Alarm Notification Window
- Set Priority at Recording Start Time When a TV & Music Group Function is Active
- Edit View/Record Timer Settings
- Change Order of Booked Programs
- Delete Booked Programs
- Check Volume of Recorded Programs
- Check Result of Timer Recording

P. 8-18



Channel Settings

Save Stations to a Channel List Automatically

→ TV → ● → Channel Settings → ●
 → Automatic → ● → YES → ● → YES
 → ● → Enter title → ●

When a Remote Control Number applies to two or more channels, select an area manually.

Save Stations of a Different Area to a Channel List

→ TV → ● → Channel List → ● →
 Not Stored → → Channel Settings →
 ● → Select Area → ● → Select area →
 ● → Select prefecture/city → ● → YES
 → ●

Switch Channel Lists

→ TV → ● → Channel List → ● →
 Select a channel list → ●

Watching TV

Start Here

[TV] windowP. 8-6

Show Program Information

[TV] window → → Program Info → ●

Adjust Brightness

[TV] window → → Display Setting →
 ● → Brightness → ● → Select a level →
 ●

Switch Main & Sub Audio

[TV] window → → Sound → ● →
 Main/Sub Sound → ● → Select an audio
 output option → ●

Switch Audio Channels

[TV] window → → Sound → ● →
 Sound Switch → ● → Select an audio
 channel → ●

Sound Switch is available when there is more than one audio channel.

Show Current Channel List Information

[TV] window → → Channel → ● →
 Channel Info → ●

Add Current Station to Channel List

[TV] window → → Channel → ● →
 Add Channel → ● → YES → ●

This function is useful when you find new stations via auto-search (press and hold).

Select a Program

[TV] window → → Channel → ● →
 Tune Service → ● → Select a service
 (program) → ●

Tune Service is available when more than one service (program) is broadcast from the same station.

Data Broadcasts

Start Here

[Data Broadcast Mode] windowP. 8-8

Reload Page Accessed from Data Broadcast

[Data Broadcast Mode] window → →
 Data Broadcast → ● → Reload Contents
 → ●



Advanced Features

Check Certificate for SSL Page

[Data Broadcast Mode] window → [F] →
Data Broadcast → ● → **Show Certificate**
 → ●

Exit Page and Return to Data Broadcast

[Data Broadcast Mode] window → [F] →
Data Broadcast → ● → **Back to Data BC**
 → ●

TV Link

Start Here

[Data Broadcast Mode] window P. 8-8

Save TV Links

[Data Broadcast Mode] window → Select
 an item → ● (→ **YES** or **YES (By default)**)
 → ●

Some TV links may have expiration dates.

Access Pages/Information from TV Links

→ **TV** → ● → **TV Link** → ●

Types of TV links are indicated by the
 following icons:

- Memo information
- Data broadcast site
- Internet content

Show Details of a TV Link

→ **TV** → ● → **TV Link** → ● → Select
 a TV link → [F] → **Display detail** → ●

Show Number of Saved TV Links

→ **TV** → ● → **TV Link** → ● → [F] →
No. of TVlink → ●

Delete TV Links

→ **TV** → ● → **TV Link** → ● → Select
 a TV link → [F]

- To Select **Delete This**
 → **Delete This** → ● → **YES** → ●
- To Select **Delete selected**
 → **Delete selected** → ● → Select a TV link
 → ● → Repeat step of selecting TV link →
 [F] → **YES** → ●
- To Select **Delete All**
 → **Delete All** → ● → Enter Security Code
 → ● → **YES** → ●

Recording Programs

Start Here

[Recorded Program List] P. 8-11

Edit Title of a Recorded Program

[Recorded Program List] → Select a
 program → [F] → **Edit Title** → ● → Edit
 title → ●

Reset Title of a Recorded Program

[Recorded Program List] → Select a
 program → [F] → **Initialize Title** → ● →
YES → ●

Switch Views of Recorded Program List

[Recorded Program List] → [F] → **Switch
 List** → ● → **Title** or **Title + Image** → ●

Check Information on a Recorded Program

[Recorded Program List] → Select a
 program → [F] → **Show Info** → ●

Check Volume of Recorded Programs

[Recorded Program List] → [F] → **Check
 Memory** → ●



Advanced Features

Delete Recorded Programs

[Recorded Program List] → Select a program →

- To Select *Delete This*
→ *Delete This* → → YES →
- To Select *Multiple-choice*
→ *Multiple-choice* → → Select a file →
● (repeat to select another file) → → *Delete* → → YES →
- To Select *Delete All*
→ *Delete All* → → Enter Security Code
→ → YES →

View/Record Timer

Start Here

[Booking Program List] P. 8-14
[View Timer Setting] window P. 8-14
[Timer Recording List] P. 8-14
[Record Timer Setting] window P. 8-14

Select a Timer Alarm Tone

[View Timer Setting] window → →
→ Select a folder → (→ Select a sub folder →) → Select an alarm tone →

Enter Title of Booked Program

[View Timer Setting] window / [Record Timer Setting] window → → → Enter program title →

Set Regular Activation of View or Record Timer

[View Timer Setting] window / [Record Timer Setting] window → → → 1 Time, Daily or Select Day →

When *Select Day* is specified, select days of the week and press .

Set Timer Alarm Volume

[View Timer Setting] window / [Record Timer Setting] window → → → to adjust volume →

Activate TV Directly from Timer Alarm Notification Window

[View Timer Setting] window → → → ON or OFF →

When ON is set, press twice, select YES and press from Alarm Notification window to activate TV and watch the booked program.

Set Priority at Recording Start Time When a TV & Music Group Function is Active

[Record Timer Setting] window → → → Recording or Operation Preferred → →

When *Recording* is set, the function in operation is interrupted/ended, and recording starts. When *Operation Preferred* is set, a confirmation asking to start recording appears.

Edit View/Record Timer Settings

[Booking Program List] / [Timer Recording List] → Select a booked program → → Edit each item →

Playing Programs

Start Here

[Recorded Program Playback] window P. 8-11

Specify Point to Start Playback

[Recorded Program Playback] window → → → Location → → to specify point →



Advanced Features

Change Order of Booked Programs

[Booking Program List] / [Timer Recording List] → → **Sort** → → Select a criterion →

Delete Booked Programs

[Booking Program List] / [Timer Recording List] → Select a program → → **Delete** →

- To Select *Delete This*
→ *Delete This* → → **YES** →
- To Select *Delete selected*
→ *Delete selected* → → Select programs → → Repeat step of selecting programs → → **YES** →
- To Select *Delete All*
→ *Delete All* → → Enter Security Code → → **YES** →

Select *Delete past* to delete old bookings.

Check Volume of Recorded Programs

[Timer Recording List] → → **Memory Info** →

Check Result of Timer Recording

→ **TV** → → **Result Timer Rec** →
→ Select an entry →
 Press to play the recorded program.

